

I AM STRONGER

I AM LIGHTER

I AM DURABLE

I AM ENERGY EFFICIENT

I AM
VECTRIX™

VECTOR MEETS MATRIX

VECTRIX™ (n.) /'vɛktriks/

CRANE SPREADERS

A portmanteau word formed through the merging of Vector and Matrix, representing a new crane spreader series, trademarked by ELME Spreader AB in 2025.

VECTOR (n.) /'vɛktə/

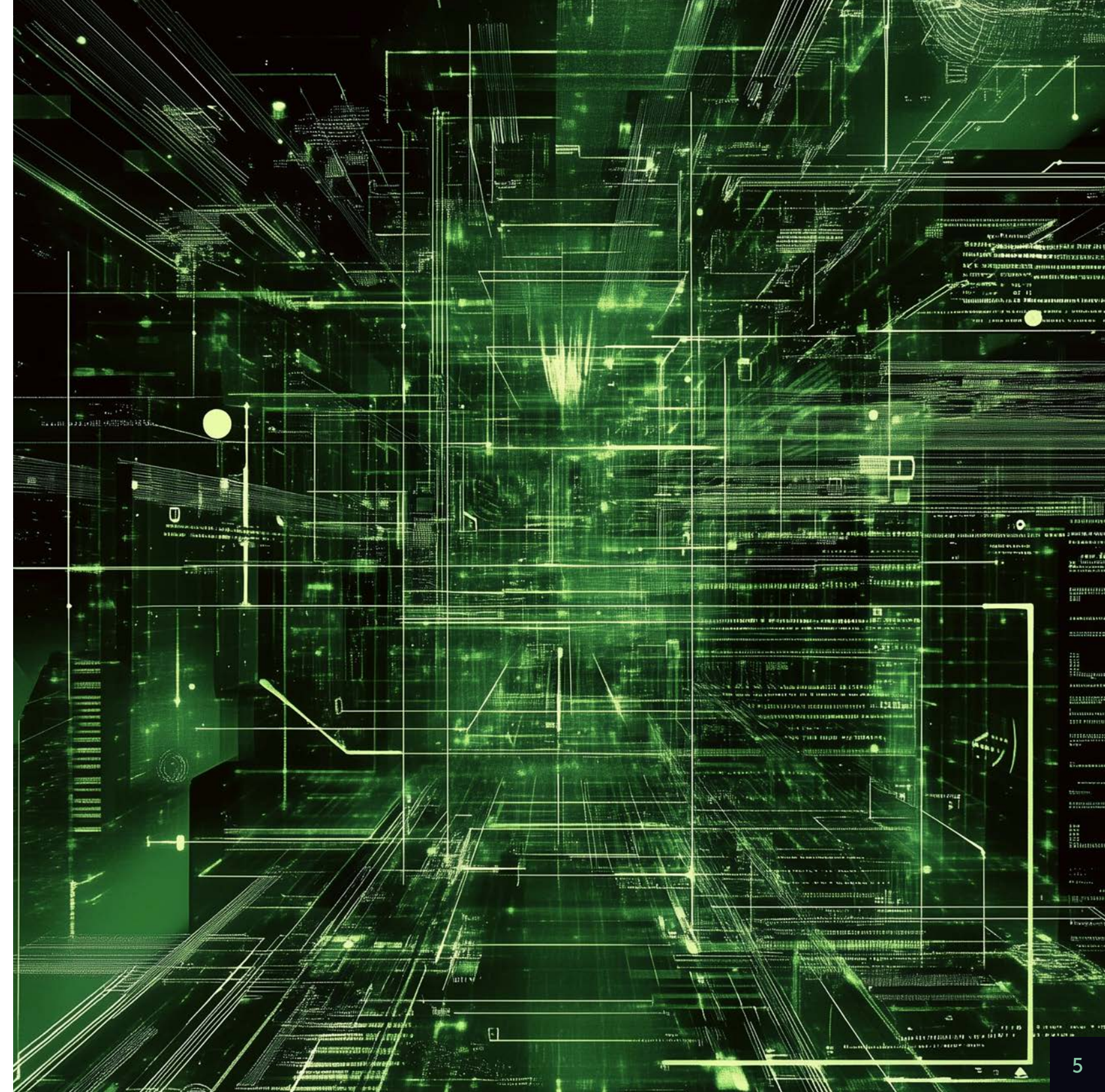
CRANE SPREADERS

A directional force with magnitude that ensures not only accuracy and efficiency but also contributes to the overall strength and durability of the spreader through optimized movement and force application.

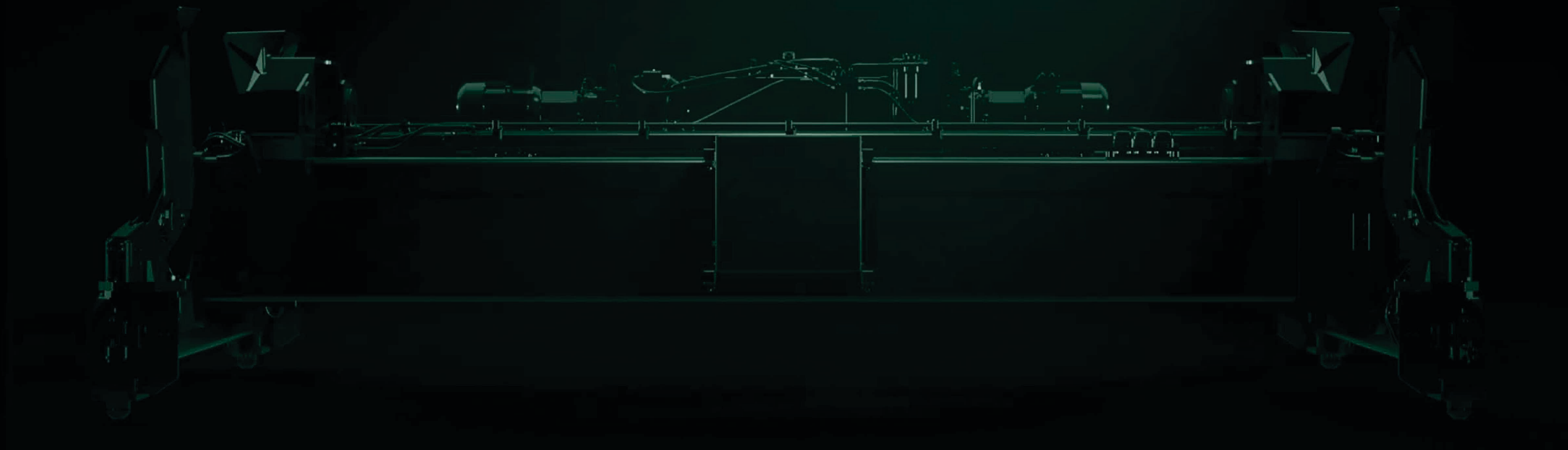
MATRIX (n.) /'meɪtriks/

CRANE SPREADERS

A complex system of interconnected mechanical, hydraulic, and electronic components of a spreader, designed to optimize the performance and functionality.



WAKE UP TO A NEW WORLD OF CRANE SPREADERS



VECTRIXTM

ENGINEERED WITH PRECISION and combining years of experience with forward-thinking innovation, the Vectrix spreader series represents a new standard in performance.

Central to its performance is the idea of vector meets matrix — a balance of strength, durability, and smart mechanics.

This synergy allows the Vectrix spreaders to be energy efficient

and at the same time robust and trustworthy.

With a modular design, the Vectrix spreader series offers a cost-effective customization by the possibility to easily replace or adapt individual components to meet specific operational needs, resulting in easier maintenance, reduced downtime, and an extended lifespan.

THE VECTRIX SPREADERS MISSION

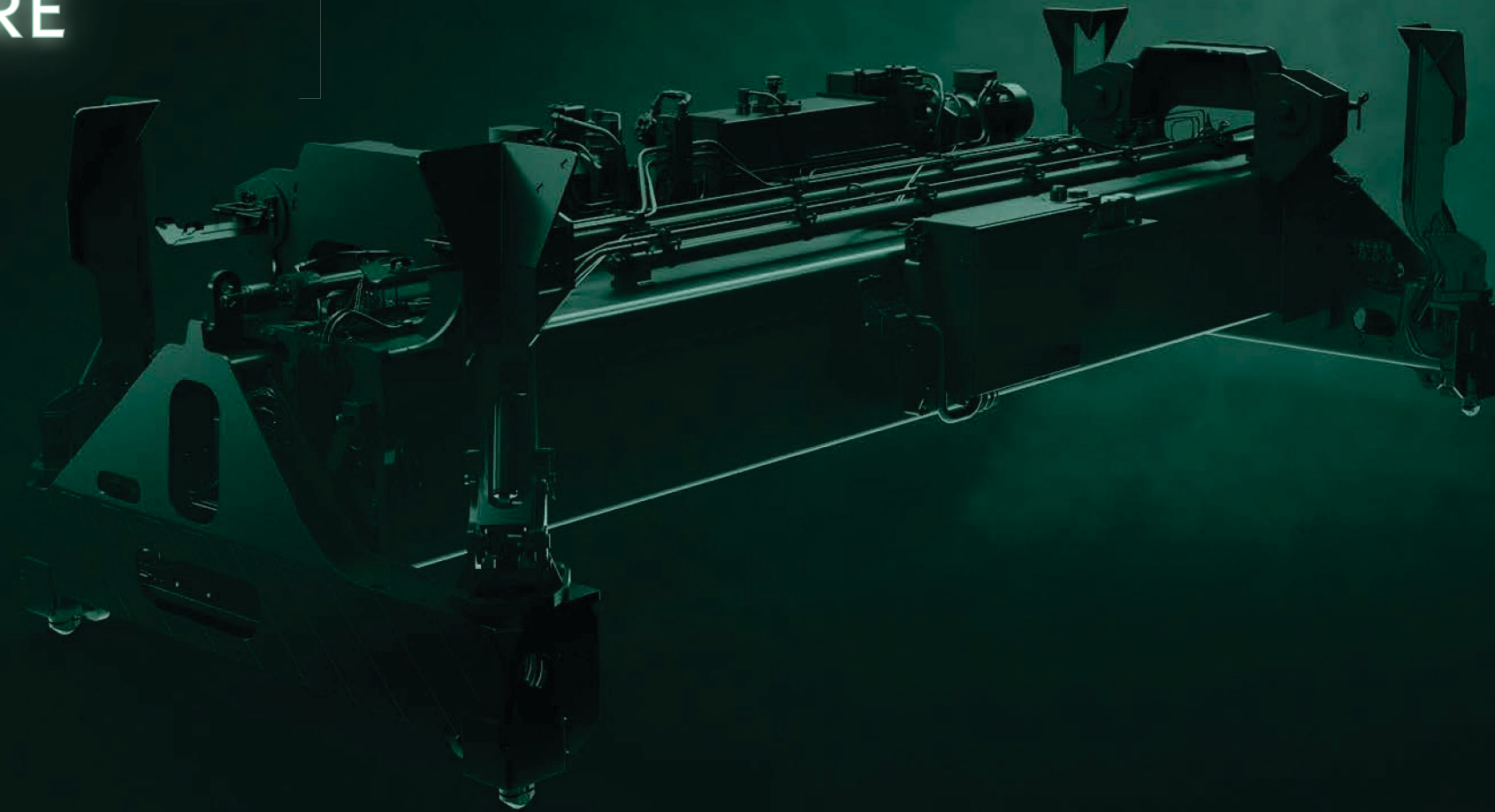


WITH THE MISSION TO DELIVER a crane spreader solution that not only meets but exceeds the evolving needs and requirements of the global market, ELME Spreader AB is dedicated to offering spreaders with the highest standards of quality, providing optimal reliability and performance.

Engineered to provide long-term value through every lift, the Vectrix spreader series supports future operational changes and growth, while continuing to meet the evolving demands of the industry.



ENGINEERED FOR
THE FUTURE



WITH FIFTY YEARS OF EXPERIENCE in the container handling business, Vectrix is the outcome of the latest product development focused specifically on the crane spreader portfolio.

Engineered with inspiration from the successful design principles of our world-leading truck spreaders, the Vectrix crane spreaders have been carefully designed to offer a solution to the market that meets the highest industry standards. All spreaders are designed in compliance with EN15056 and EN13001.

Every detail has been optimized through our unique in-house process, where our skilled engineers work closely with the production team.

This seamless collaboration means that every design is not only thoroughly tested but is also constantly improved upon.

Welcome to the future. Made in Sweden.





I AM STRONGER

THE VECTRIX SPREADER SERIES features an updated design with increased structural strength, including enhanced piggyback legs, a reinforced frame, and an increased lifting capacity up to 50 tons.

This design contributes to an even distribution of forces throughout the structure, reducing stress levels and minimizing weak points that could lead to failure.

As a result, the material is less prone to fatigue, extending the expected lifespan, improving safety, and enhancing overall performance.

I AM LIGHTER

WITH THE STRUCTURALLY OPTIMIZED DESIGN of the Vectrix spreaders, unnecessary weight is eliminated in non-critical areas while maintaining full lifting capacity. This design reduces the need for extra reinforcements, keeping the spreader as light as possible.

This reduction in weight decreases strain on the cranes, enhancing durability and extending equipment lifespan.

It also improves energy efficiency, optimizes the use of the crane's lifting capacity, and lowers operational costs, resulting in a more efficient and cost-effective container handling solution.





I AM ENERGY EFFICIENT

THANKS TO ITS OPTIMIZED STRUCTURAL DESIGN, which results in the Vectrix spreaders being as light as possible, this reduced weight lowers the strain on the cranes, simultaneously decreasing the energy use proportionally.

For the hydraulic spreader models, the design incorporates a hydraulic system that reduces unnecessary energy consumption by unloading the pumps as standard when no command is given.

With the possibility to choose between hydraulic, electric, or hybrid spreaders, the Vectrix spreader series allows a selection of the best solution based on the specific operational needs. Each alternative is tailored to optimize energy consumption.

I AM DURABLE

THE VECTRIX SPREADER SERIES is designed for maximum durability, contributing to consistent performance throughout the spreader's lifecycle.

The absence of local reinforcements in the frame structure suggests that the entire spreader will last longer, helping to increase productivity by maintaining high operational uptime.

In addition, the design helps prevent premature fatigue, resulting in a spreader that remains a reliable and efficient tool for years to come.



THE VECTRIX BENEFITS

- Designed and manufactured in Sweden with European steel.
- Shorter lead times enabled by a modular design, making the spreaders easier to configure, order, and manufacture.
- Smart design and streamlined assembly make maintenance simple, with better serviceability, and facilitates for future upgrades and add-ons.
- A wide range of different models to fit a variety of needs, with a high customization of options.
- Stop positions of 20ft-40ft or 20ft-40ft-45ft as standard, with other interim stop positions available as an option.
- Feature for remote diagnostic for quick and easy troubleshooting.
- All spreaders can be adapted to customer specific suspension.
- The hydraulic system includes a standard feature that automatically unloads the hydraulic pumps to reduce energy consumption and noise.
- The ELME trusted piggyback legs are carried over to the Vectrix crane spreader series, enhanced for improved performance.

HYDRAULIC SPREADERS



8210/8215 VECTRIX

ELECTRIC SPREADERS



8210E/8215E VECTRIX

HYBRID SPREADERS



8610H/8615H VECTRIX

ELME™

Swedish Spreader Systems

Stålgatan 6, 343 34 Älmhult

Sweden +46 10 222 18 00

www.elme.com

sales@elme.com